

**GREAT DEAL HYGIENIC  
HANGER HAS COME**



**NEW ITEM**

## **NP ADAPTIVE MOUNT HANGER**

Hygienic Hangers  
for Hygienic Tube Support





## ASME BPE Standard Compliance

adaptive hanger useful for tube/piping installation and equipment manufacturing in pharmaceutical, biotechnology, and food industries.

### SIZE RANGE

6.35MM DIAMETERS THROUGH 203.2MM DIAMETER COVERING IMPERIAL TUBE, PIPE AND COPPER SIZES. ISO AND DIN STANDARDS, AND SPECIAL DIAMETERS AVAILABLE UPON REQUEST.

### GUIDES

ALLOWS FREE AXIAL MOVEMENT FOR THERMAL EXPANSION OF TUBE OR PIPE

### TILT

0 - 6°

### COMPONENT

PTFE (THERMO CONDUCTIVITY 0.23 W/MK , MELTING POINT 327°C)

### HARDWARE

304 STAINLESS STEEL (STANDARD),  
316 STAINLESS STEEL

## Self Adaptive Design

The hanger clamps are designed to adapt to the angle of the pipe or tube installation, facilitating efficient drainage. Additionally, these clamps can rotate 360 degrees, allowing them to align perfectly with the direction of the pipe or tube.

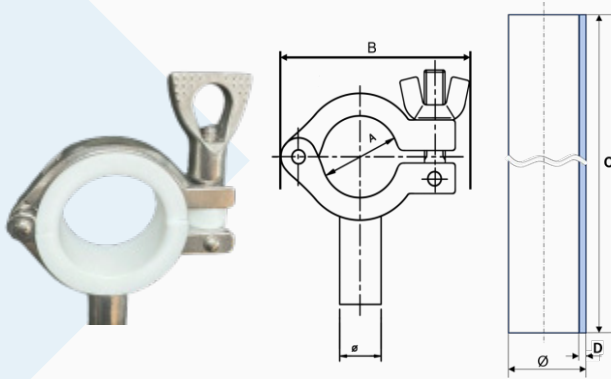
## Various Applications

versatile adaptive fixed hanger that can be used in various applications, ranging from infrastructure construction to equipment guide installations in pharmaceutical, biotechnology, and food industries.



## HANGER SUPPORT

### ○ SUPPORT PIPE HANGER TYPE

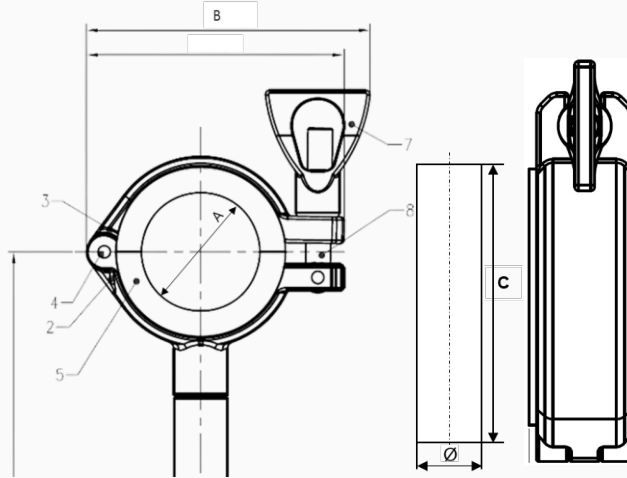


| Size    | A     | B      | C   | D   | φ    |
|---------|-------|--------|-----|-----|------|
| 1/2 S   | 12.7  | 57.04  | 200 | 3.2 | 17.3 |
| 3/4 S   | 19.05 | 68.70  |     | 3.9 | 27.2 |
| 1 S     | 25.4  | 70.42  |     | 3.9 | 27.2 |
| 1 1/2 S | 38.1  | 91.15  |     | 3.9 | 27.2 |
| 2 S     | 50.8  | 102.05 |     | 4.5 | 34   |
| 2 1/2 S | 63.5  | 119.40 |     | 4.5 | 34   |
| 3 S     | 76.3  | 134.80 |     | 4.5 | 34   |
| 4S      | 101.6 | 160.50 |     | 4.5 | 34   |

○ C,D,Ø can be changed and determined after consultation

○ Tube thickness of D is applied based on sch 80

### ○ SUPPORT ROUND BAR HANGER TYPE

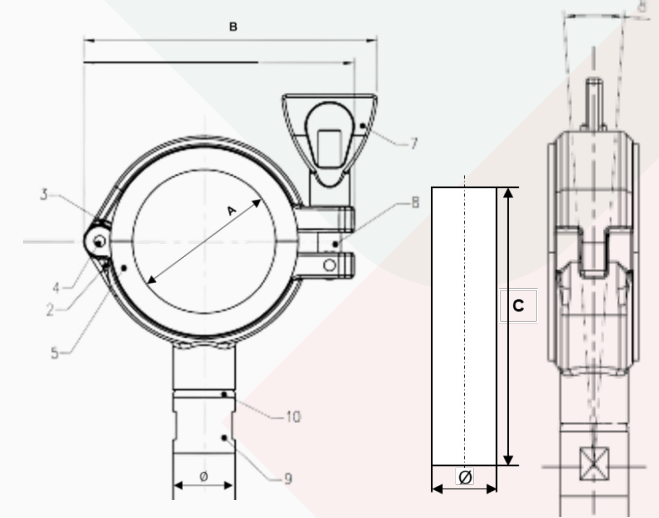


| Size    | A     | B     | C   | φ    |
|---------|-------|-------|-----|------|
| 1/2 S   | 12.7  | 59.2  | 200 | 17.0 |
| 3/4 S   | 19.05 | 68.2  |     | 17.0 |
| 1 S     | 25.4  | 75.7  |     | 17.0 |
| 1 1/2 S | 38.1  | 91.3  |     | 17.0 |
| 2 S     | 50.8  | 104.0 |     | 22.0 |
| 2 1/2 S | 63.5  | 121.5 |     | 22.0 |
| 3 S     | 76.3  | 134.5 |     | 22.0 |
| 4S      | 101.6 | 160.1 |     | 22.0 |

○ ASME BPE and KS (JIS) standards are available

○ PTFE (thermo conductivity 0.23 W/MK, MELTING POINT 327°C

## Self Adaptive HANGER SUPPORT



| Size    | A     | B     | C   | φ    | Tilt |
|---------|-------|-------|-----|------|------|
| 1/2 S   | 12.7  | 59.2  | 200 | 17.0 | 8°   |
| 3/4 S   | 19.05 | 68.2  |     | 17.0 |      |
| 1 S     | 25.4  | 75.7  |     | 17.0 |      |
| 1 1/2 S | 38.1  | 91.3  |     | 17.0 |      |
| 2 S     | 50.8  | 104.0 |     | 22.0 |      |
| 2 1/2 S | 63.5  | 121.5 |     | 22.0 |      |
| 3 S     | 76.3  | 134.5 |     | 22.0 |      |
| 4S      | 101.6 | 160.1 |     | 22.0 |      |

○ C's length can be changed.

○ Tilt moves 360° in 8°.

○ 304 STAINLESS STEEL(STANDARD),  
316 STAINLESS STEEL

